



## Roadmap: Mondelez International

### Background

At the 2022 General Meeting of the German Initiative on Sustainable Cocoa (GISCO), members decided to publish individual roadmaps with commitments and milestones as well as progress reports on these commitments.

The individual roadmaps are based on the [GISCO roadmap](#) which lists the goals, targeted indicators and recommendations for action on the focus topics of certified cocoa/cocoa from company programmes, traceability, deforestation/agroforestry, child labor and living income.

These public individual commitments complement the annual monitoring process carried out in cooperation with the ISCOs (European Initiatives for sustainable cocoa), give visibility of the members' contributions to the [GISCO objectives](#) and strengthen individual accountability.

### Commitments

- [Traceability](#)
- [Certified cocoa and cocoa from company programmes](#)
- [Deforestation/Agroforestry](#)
- [Child Labour](#)
- [Living Income](#)

### Comment of the member on the roadmap:

Mondelēz International and Cocoa Life define program goals to advance cocoa sustainability of the cocoa sourced through Cocoa Life. The overview in this document highlights the goals and approaches of Cocoa Life. These are not commitments towards the German Initiative on Sustainable Cocoa.

## Traceability

### **Commitment** (submitted in December 2022):

Traceability Related Ambition and Approaches of Cocoa Life:

Ambition: Our goal is 100% cocoa volume for Mondelez chocolate brands sourced through Cocoa Life by 2025. (page 11, SMR Report 2023 / footnote 2)

Approaches:

- We work with about 243,000 farmers who together grow enough (or more) cocoa to make every bar of chocolate with the Cocoa Life logo on pack. All farmers are registered with the program and their farms are mapped. We trace this cocoa from the farm until it reaches our cocoa suppliers, who process our beans for us.
- We publish our progress annually and work with FLOCERT (the global certifier for Fairtrade) and Ipsos (third party research agency) to independently verify and measure our progress and keep us on track.
- FLOCERT traces and verifies the flow of cocoa from Cocoa Life communities into the supply chain. It also confirms that the benefits of the program, such as premium payments, are passed to farmer organizations and their farmers.
- Ipsos works on the ground to measure our program and the impact we have. It looks at 10 key performance indicators - such as cocoa yield and reduction in child labor - to assess whether we're creating the right change in these areas.

Snacking Made Right Report 2023, page 11 | : Reported information covers the period from November 1, 2022 through October 31, 2023. | Footnote 2: Goal and reported information for cocoa volume sourced is based on a mass balance approach, which means that the equivalent volume of cocoa needed for the products sold under our chocolate brands is sourced from the Cocoa Life program. Reported information for the period from January 1, 2023 to December 31, 2023 includes volumes from cocoa producing countries Brazil, Côte d'Ivoire, Dominican Republic, Ecuador, Ghana, Indonesia, India, and Nigeria unless otherwise stated (which differs from prior years). Excludes markets where Mondelez International does not sell chocolate brands. Reported information based on latest estimate; independent, third-party verification in-progress. Any updates, if needed, will be included in the ESG Datasheet.

### **Milestone 1:**

75% by end of 2021

### **Milestone 2:**

85% by end of 2023 (Source: Snacking made right Report 2023)

### **Progress** (submitted in December 2024):

We are working towards our 2025 goal to source all the cocoa volumes needed for our chocolate brands, on a mass balance approach, through Cocoa Life. By the end of 2023, approximately 85% of cocoa volume for Mondelez International chocolate brands was sourced through Cocoa Life. This includes global brands Cadbury Dairy Milk, Milka, Côte d'Or, Toblerone, Freia, Marabou, Daim, Suchard and the local brand Lacta in Brazil. (Source: Snacking made right Report 2023)

### **Challenge:**

The ability of local farmer organizations to support data management with respect to farmer registration, record keeping, and farm mapping is increasingly important and additional local capacity building will support strengthening of local institutions and ability of traceability systems.

## Certified cocoa and cocoa from company programmes

**Commitment** (submitted in December 2022):  
Verification Related Approaches of Cocoa Life:

Approaches:

Volume & Premium Verification

- To support the volume of cocoa we need, we trade with farmers/organizations through our suppliers, externally verifying the volume we buy, and premiums farmers are paid.
- Through our supplier agreements, Mondelez International agrees the volume upfront that we're going to buy from the 209,000+ farmers we work with in the program.
- These volumes are registered by FLOCERT in their Flotis system.
- FLOCERT then independently verifies the amount of cocoa bought from the farmers and the premium paid to each of them through the traders/suppliers.
- This way we can know that our goals have been fulfilled.
- The system tracks every ton of cocoa under Cocoa Life until it enters our supply chain. If it cannot trace a batch of cocoa, FLOCERT drills in to find out where it came from and whether the premium was paid.

Outcome & Impact Evaluation

- Ipsos evaluates Cocoa Life based on the program's global Key Performance Indicators (KPIs). Impact assessments are based on longitudinal panel studies that are statistically representative of Cocoa Life participants in each Cocoa Life origin country.

**Milestone 1:**

85% by end of 2023 (Source: Snacking made right Report 2023)

**Milestone 2:**

-

**Progress** (submitted in December 2024):

We are working towards our 2025 goal to source all the cocoa volumes needed for our chocolate brands, on a mass balance approach, through Cocoa Life. By the end of 2023, approximately 85% of cocoa volume for Mondelez International chocolate brands was sourced through Cocoa Life. This includes global brands Cadbury Dairy Milk, Milka, Côte d'Or, Toblerone, Freia, Marabou, Daim, Suchard and the local brand Lacta in Brazil. (Source: Snacking made right Report 2023)

Footnote 2: Goal and reported information for cocoa volume sourced is based on a mass balance approach, which means that the equivalent volume of cocoa needed for the products sold under our chocolate brands is sourced from the Cocoa Life program. Reported information for the period from January 1, 2023 to December 31, 2023 includes volumes from cocoa producing countries Brazil, Côte d'Ivoire, Dominican Republic, Ecuador, Ghana, Indonesia, India, and Nigeria unless otherwise stated (which differs from prior years). Excludes markets where Mondelez International does not sell chocolate brands. Reported information based on latest estimate; independent, third-party verification in-progress. Any updates, if needed, will be included in the ESG Datasheet.

**Challenge:**

## Deforestation/Agroforestry

### **Commitment** (submitted in December 2023):

Deforestation/Agroforestry Related Ambition and Approaches of Cocoa Life:

Ambition: Cocoa Life seeks no deforestation on Cocoa Life farms globally.

Approaches:

- We are helping farmers to grow more cocoa on less land so that they can increase their yields on their farms and don't expand into forests. We encourage farming activities that improve farmers' productivity and income.
- We can see agroforestry is a part of the solution: producing the same volume of cocoa from less land will leave farmers room for crop diversification and stop farm expansion into protected areas.
- We train farmers and communities to adopt the best agricultural and environmental practices to become more sustainable, efficient, and resilient.
- We're working closely with our suppliers to confirm they cover their entire cocoa volume they supply to us. This is to ensure that our cocoa is deforestation-free and that child labor due diligence is in place by 2025
- MDLZ is a founding member of the Cocoa & Forests Initiative (CFI) and, in 2019, released action plans to end deforestation in the cocoa sector and restore forest areas — alongside cocoa-producing countries of Côte d'Ivoire and Ghana, and the world's leading chocolate and cocoa companies

### **Milestone 1:**

- By the end of 2021 mapped about 78% of farms working with Cocoa Life farms
- Recent findings show near to no deforestation on or closely around Cocoa Life farms in West Africa since 2018 (0.1% in Ghana and 0.4% in CIV)
- Trained more than 208,000 farmers on Good Agricultural Practices to increase yield and protect the environment and distributed over 4.5 million economic non-cocoa (or shade) trees to provide additional sources of income and shade to help cocoa grow.
- We have trained more than 335,000 community members and farmers on Good Environmental Practices so they can help protect the environment.

### **Milestone 2:**

- By the end of 2023, we have mapped more than 256,000 Cocoa Life farms.
- We have provided training on Good Agricultural Practices (GAP) to around 225,000 farmers through the end of 2023. These trainings aim to improve farm productivity.
- By the end of 2023, we distributed over, 8.59 million non-cocoa trees to farmers. (Source: Snacking made right Report 2023)



**Progress:** (submitted in December 2024):

As part of Cocoa Life, we believe in conserving the land and forests for today and for tomorrow. That's why Cocoa Life is focused on helping protect and restore forests and works with partners and governments to help farmers grow more resilient farms through agricultural practices, such as promoting agroforestry techniques and planting non-cocoa trees to protect crops from excessive sun and heat. These trees also promote biodiversity and can provide farmers with additional income. By the end of 2023, we distributed over, 8.59 million non-cocoa trees to farmers.

A way in which we protect forests is by applying farm mapping technologies to monitor deforestation for communities. Farm mapping enables us to identify problem areas and gain a deeper understanding of farming community needs and farm boundaries. As new farmers and cooperatives join the Cocoa Life program, we continue to expand mapping for communities, even in hard-to-reach areas. By the end of 2023, we have mapped more than 256,000 Cocoa Life farms. (Source: Snacking made right Report 2023)

**Challenge:**

Socio-economic safeguards for rural population impacted by zero-deforestation goals to prevent fallback to deforestation in other crop chains or goods.

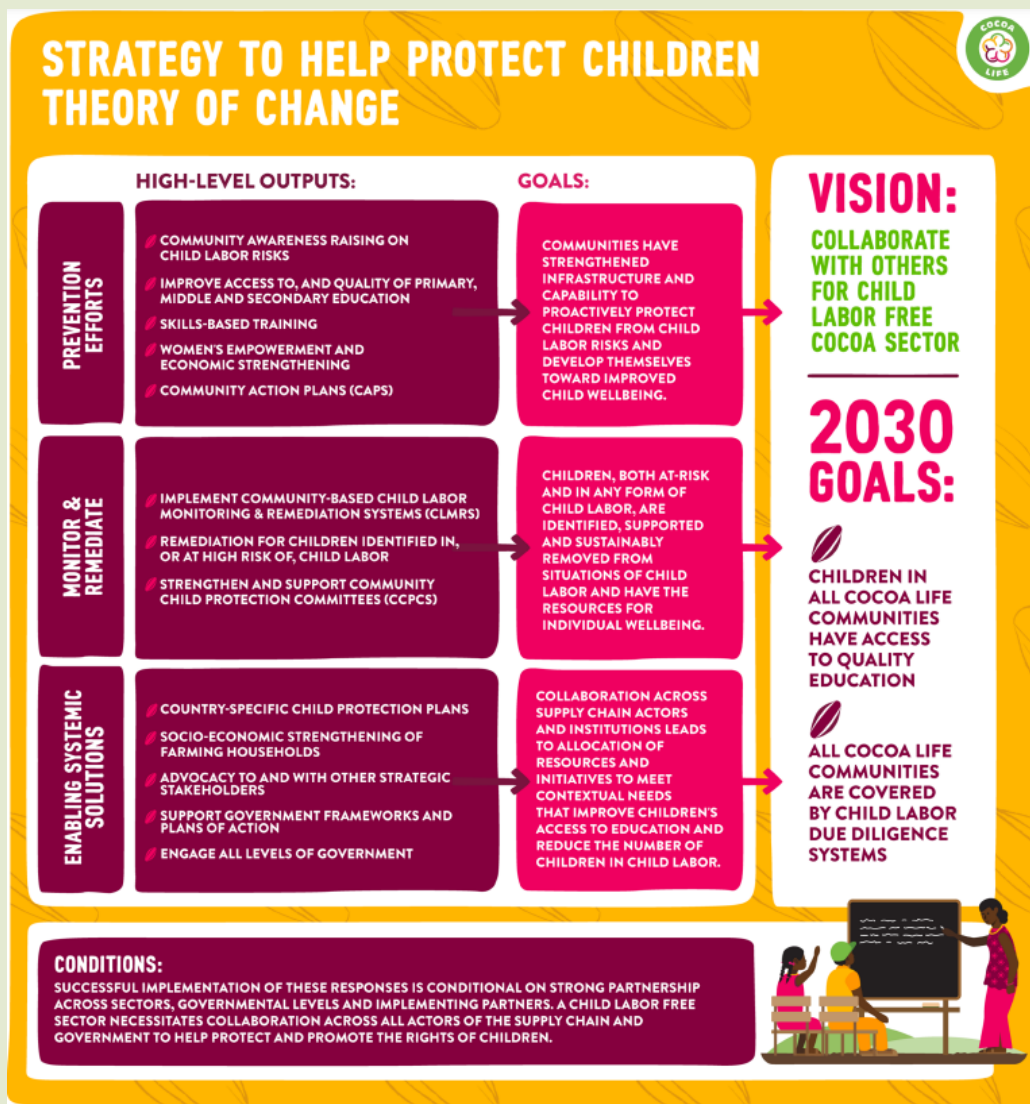
# Child Labour

**Commitment** (submitted in December 2023):  
Child Protection Related Ambition and Approaches of Cocoa Life

Ambition: Enhance child protection systems and enable access to quality education in Cocoa Life communities - as laid out in our Cocoa Life Strategy To Help Protect Children

Approaches:

- To accomplish this, our program is focused on helping to implement three primary areas of response; 1) Prevention Efforts; 2) Monitoring and Remediation; and 3) Helping Enable Systemic Solutions. Our approach seeks to mirror international child protection system strengthening standards



**Milestone 1:**

61% of Cocoa Life communities in West Africa covered with Child Labor Monitoring and Remediation Systems, with a goal to reach 100% by 2025

**Milestone 2:**

~75% of Cocoa Life communities in West Africa are covered by a Child Labor Monitoring & Remediation System (CLMRS) (Source: Snacking made right Report 2023 / Footnote 14)

Footnote 14 | Reported information for the period from January 1, 2023 to December 31, 2023 includes a Cocoa Life community in Ghana, Côte d'Ivoire, or Nigeria as covered by CLMRS if one or more household(s) in the community were visited and interviewed to identify children, if any, in or at risk of child labor, at least once over the last 2 years (January 1, 2022 through December 31, 2023), even if any appropriate remediation and post-remediation follow-up has not yet occurred. CLMRS data is collected and provided to MDLZ by third parties. An independent, third-party assurance process is underway, and any subsequent findings may result in changes to reported information if the underlying criteria, estimates, or available evidence change, as we continue to enhance our processes. Any updates, if needed, will be included in the ESG Datasheet.

**Progress** (submitted in December 2024):

In the course of 2023, as we continued to scale the program, we expanded the Cocoa Life program in West Africa by approximately 12% (over 300 communities). In parallel, we continued our efforts to enhance the quality of implementation of our CLMRS.

By the end of the year, approximately 75% of Cocoa Life communities (or approximately 2,100 communities) in West Africa were covered with a CLMRS, on track towards our goal to cover all West African Cocoa Life communities with a CLMRS by the end of 2025 (footnote 14) . In addition, we partnered with the International Cocoa Initiative to perform an assessment of our CLMRS in Côte d'Ivoire and Ghana and identify opportunities to further enhance systems implementation and help develop standards for household monitoring and identification, in line with emerging sector practices.

(Source: Snacking made right Report 2023)

Footnote 14: Reported information for the period from January 1, 2023 to December 31, 2023 includes a Cocoa Life community in Ghana, Côte d'Ivoire, or Nigeria as covered by CLMRS if one or more household(s) in the community were visited and interviewed to identify children, if any, in or at risk of child labor, at least once over the last 2 years (January 1, 2022 through December 31, 2023), even if any appropriate remediation and postremediation follow-up has not yet occurred. CLMRS data is collected and provided to MDLZ by third parties. An independent, third-party assurance process is underway, and any subsequent findings may result in changes to reported information if the underlying criteria, estimates, or available evidence change, as we continue to enhance our processes. Any updates, if needed, will be included in the ESG Datasheet.

**Challenge:**

Scaling systems that are fast and ensuring effectiveness, promoting local ownership.

## Living Income

### **Commitment** (submitted in December 2024):

Ambition: Increase the number of farming households reaching a living income

Approach:

- At Cocoa Life, we believe that profitable farming businesses can lead to more financial resilience. We work with suppliers and NGOs to help farmers improve cocoa productivity and generate income from additional businesses. Our support includes farmer trainings, incentives and purchasing practices.

### **Milestone 1:**

- We have provided training on Good Agricultural Practices (GAP) to around 225,000 farmers through the end of 2023.
- By the end of 2023, we have provided training to approximately 360,000 community members in jobs outside of cocoa growing
- By the end of 2023, Cocoa Life had helped to establish about 5,600 VSLAs (25), which now serve approximately 374,000 community members (footnote 25)

Footnote 25 Reported information for the period from January 1, 2023 to December 31, 2023 covers Brazil, Cameroon, Côte d'Ivoire, Dominican Republic, Ecuador, Ghana, Indonesia, India, and Nigeria unless otherwise stated (which differs from prior years).

### **Milestone 2:**

-

### **Progress** (submitted in December 2026):

### **Challenge:**

Poverty and low incomes are root causes for many challenges cocoa farming communities face. In recent years, the global agricultural and commodities environment faced a number of pressures that were particularly challenging within the cocoa sector. In addition to global economic challenges, major cocoa-producing countries struggled with high inflation and an unprecedented low cocoa crop yield world-wide due to weather and crop disease.

(Source: Snacking made right Report 2023)